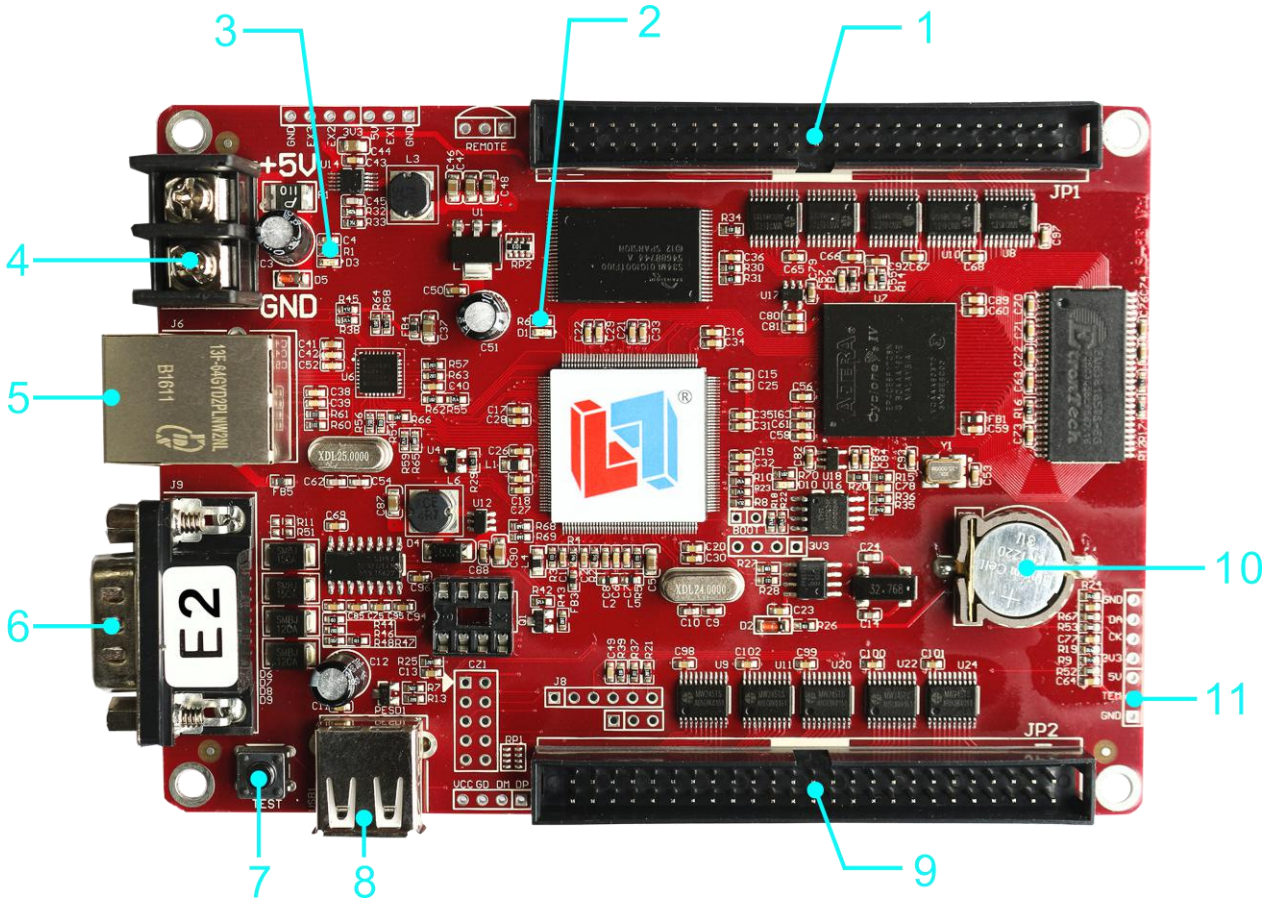


LS-E2 SPECIFICATION

Version	Date	Reason
V1.00	20/04/2015	Document

Hardware



Number	Name	Description
1	50PIN interface 1	Connect pinboard
2	Operation light	Show operating state
3	5V power light	Show power state
4	5V power port	Wide voltage 3.5V-6V
5	100M network interface	Net communication interface
6	DB9 interface	Serial interface DB9
7	Multi-functional button	Functions : 1.test LED display 2.factory data reset
8	USB intyface	USB interface
9	50PIN interface 2	Connect pinbboard
10	RTC button battery	RTCsupplying battery , voltage 3V
11	Sensor interface	Connect temperture/ humiditure 温度/

Product Parameters

Product type	LS-E2
Control range	Double color 512K
On-load (single/dual color)	4096*128 2048*256 1024*512
Memory	128MByte
application	All single/ dual color LED display
Software function	Cluster management/ multi-area display/ many languages
program	128programs, each of it has 16 areas
Area type	Image& text/ subtitle/animation/digit clock/dial plate/count up-down/temperature/humiture
Frame	Full screen frame/ part of screen frame
Clock	Digit clock/analog clock/count up/ countdown
Communication	100M network interface, USB, RS232 , RS485
Display interface	2*50 PIN
Sensor	temperature sensor, humiture sensor
Brightness	16level, adjusted via timing or manually
Remote switch	Switch on/ off via timing or software
Voltage	+5V
Max power	< 1W
Working	-40℃-85℃
Secondary	Complete DLL
Auxiliary software	LED Player 6.0

Serial Interfaces

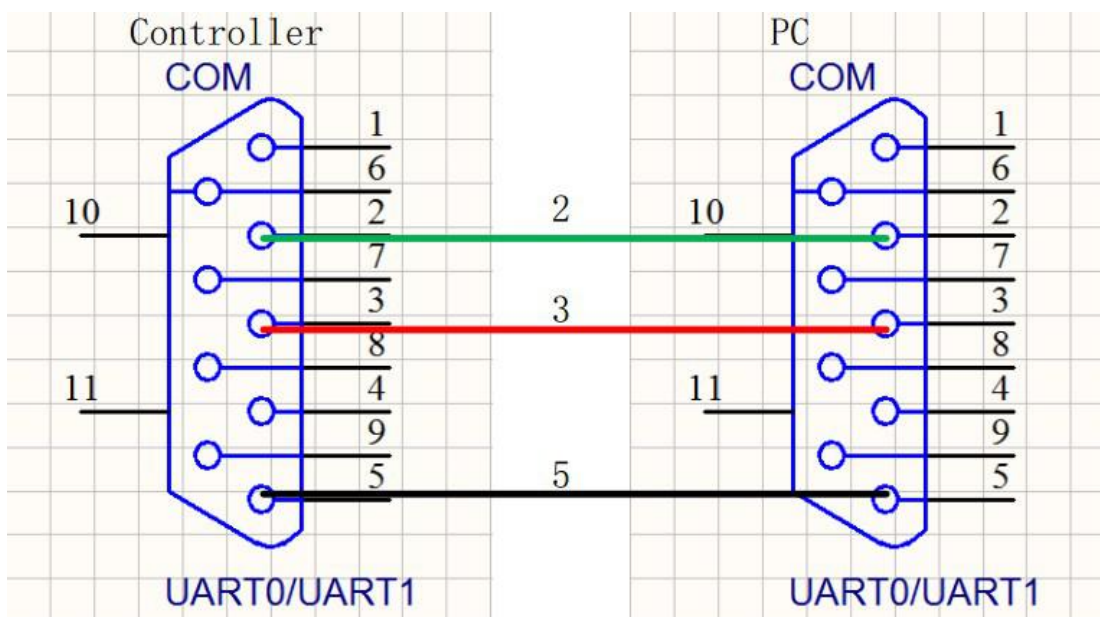
Serial interface: DB9 interfaces. Explanation as follows:

Pin number	Pin name	Description
2	TXD	RS232 send
3	RXD	RS232 receive
5	GND	Power ground
7	DATA+	RS485 D+
8	DATA-	RS485 D-

Notice: other pins have no need to connect. 232 use 232 serial line to communicate

Controller has two communication forms of 232 and 485. Use 232 serial line to connect with computer in 232 communication form.

Connection drawing:



Dimensional Drawing

